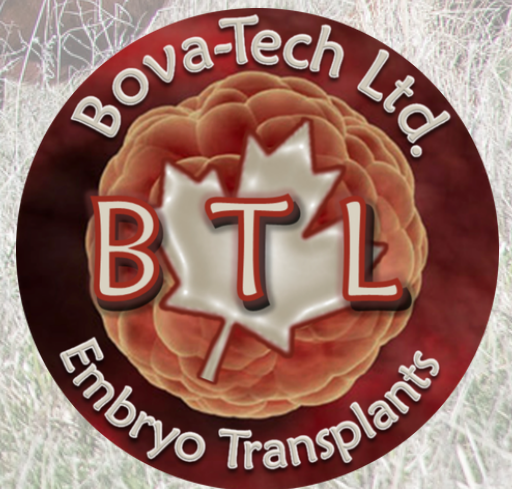


RED ANGUS

EMBRYOS

For Sale



Bova-Tech Ltd.

B T L



Embryos for Sale

www.bova-tech.com

(403) 332-1567

Red ACC

LAMBDA 1Z



CREED 214C



A blend of a well-known pedigrees and a top donor cow from Anderson cattle Co. Red ACC Lambda 1Z is a dark red, moderated framed with lots of muscle definition and a high milk EPD. She is the dam of Red ACC Bigshot 118E a bull that surprised everyone in the spring when he was purchased by a syndicate during the 2018 bull sale.

1Z is a very stylish smooth fronted cow with lot of eye appeal. She is a really good cow with another outstanding calve at side this year, weaned on August 14th weighing 751 pounds at around 6.5 months of age.

Herd sires with the ability to combine the power that Red Wheel Creed possesses with exceptional maternal strength in an outcross pedigree are rare to find. Creed has the length of spine, muscle expression, bone and foot size which he transmits into his calves. This bull is backed by an exceptional dam and cow family. Creed's dam, Black Wheel Jestress 1Y is a herd bull producing female. The Jestress cow family is noted for exceptional udders and hoof quality and being big ribbed productive females. A few straws of semen were available during the Pinnacle Sale in 2018, the quest for the very best Red Angus seedstock in Canada may be found. the significance of this great breeding bull is fully demonstrated throughout the pedigree, statistical information and the footnote discussion. this breeding bull, with progeny on the ground, is an opportunity to obtain the influence of one of the most dynamic breeding bulls in the industry today.



2020
Offspring



Donor Care Facility

Embryo Collection, Freezing & Transplants

IVF - In Vitro Fertilization

Export Certified

In-Clinic & On Farm Services

Recipient Programs

Bova-Tech Ltd.

P.O. Box 80142 Airdrie, Alberta T4B 2V8 Canada

Tel: (403) 332-1567 E-mail: info@bova-tech.com



Bova-Tech Ltd.

B T L



Embryos for Sale

www.bova-tech.com

(403) 332-1567

**Red ACC
LAMBDA 1Z**



A blend of a well-known pedigrees and a top donor cow from Anderson cattle Co. Red ACC Lambda 1Z is a dark red, moderated framed with lots of muscle definition and a high milk EPD.

She is the dam of Red ACC Bigshot 118E a bull that surprised everyone in the spring when he was purchased by a syndicate during the 2018 bull sale.

1Z is a very stylish smooth fronted cow with lot of eye appeal. She is a really good cow with another outstanding calve at side this year, weaned on August 14th weighing 751 pounds at around 6.5 months of age.

**RED COCKBURN
Assassin 624D**



Assassin 624D is a bull that has created quite stir in the Red Angus industry. He is very well balanced, combining low birth, explosive growth, outstanding pheno-type, great EPD's and from a very prestigious cow family in Canada. Assassin is the first son we sell of our new calving ease herd sire Specialist, Assassins combination of calving ease and exceptional growth are hard to find.

Assassins dam is an exceptional young cow and is a maternal sister to Ribeye 308U. She is proving to be one of our top producers and is destined to be a great donor cow, just like her dam 443P. A maternal sister to Assassin was one of the high selling bred heifers at the power and perfection sale this past fall at \$15,000

Donor Care Facility Embryo Collection, Freezing & Transplants IVF - In Vitro Fertilization Export Certified In-Clinic & On Farm Services Recipient Programs

Bova-Tech Ltd.

P.O. Box 80142 Airdrie, Alberta T4B 2V8 Canada

Tel: (403) 332-1567 E-mail: info@bova-tech.com



Bova-Tech Ltd.

B T L



Embryos for Sale

www.bova-tech.com

(403) 332-1567

Red ACC

LAMBDA 1Z



A blend of a well-known pedigrees and a top donor cow from Anderson cattle Co. Red ACC Lambda 1Z is a dark red, moderated framed with lots of muscle definition and a high milk EPD.

She is the dam of Red ACC Bigshot 118E a bull that surprised everyone in the spring when he was purchased by a syndicate during the 2018 bull sale.

1Z is a very stylish smooth fronted cow with lot of eye appeal. She is a really good cow with another outstanding calve at side this year, weaned on August 14th weighing 751 pounds at around 6.5 months of age.

DUFF

1941

Red Wood



This Red Angus bull may be just as noble as the ancient redwood trees "Duff Redwood 1941". What a specimen he is in terms of depth of rib, fleshing ability and overall dimension in a moderate frame. Just like the coastal trees, you truly need to see Redwood for yourself to understand his overall quality and value.

Duff Redwood 1941 will undoubtedly leave deep roots in the beef industry.

Donor Care Facility

Embryo Collection, Freezing & Transplants

IVF - In Vitro Fertilization

Export Certified

In-Clinic & On Farm Services

Recipient Programs



Bova-Tech Ltd.

P.O. Box 80142 Airdrie, Alberta T4B 2V8 Canada

Tel: (403) 332-1567 E-mail: info@bova-tech.com



Bova-Tech Ltd.

B T L

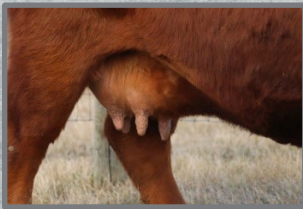
Embryos for Sale

www.bova-tech.com

(403) 332-1567



RED ACC 13B
Tibbie



Red ACC Tibbie 13B is out of a very productive red cow. This red, moderate framed cow is made correct and true. She has a style and broodiness combined with a very unique pedigree. Red Tibbie is a feminine easy fleshing cow with a perfect udder and great rib.

U-2
Reckoning 149A



High selling Red Angus to Six Mile for \$46,000 for 1/2 interest. Reckoning progeny are the right kind of cattle with a superior foot quality, added volume and very important- easy to market. The list of high sellers sired by Reckoning is very impressive due to how its progeny works in the real world and show ring. value.



Daughters of Red U-2 Reckoning



Donor Care Facility

Embryo Collection, Freezing & Transplants

IVF - In Vitro Fertilization

Export Certified

In-Clinic & On Farm Services

Recipient Programs

Bova-Tech Ltd.

P.O. Box 80142 Airdrie, Alberta T4B 2V8 Canada
Tel: (403) 332-1567 E-mail: info@bova-tech.com



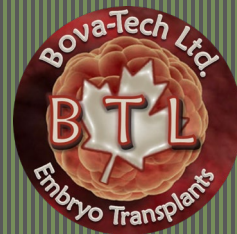
Bova-Tech Ltd.

B T L

Embryos For Sale

www.bova-tech.com

(403) 332-1567



RED ACC 13B
Tibbie

RED NCK

Coming In Hot
24E



Red ACC Tibbie 13B is out of a very productive red cow. This red, moderate framed cow is made correct and true. She has a style and broodiness combined with a very unique pedigree. Red Tibbie is a feminine easy fleshing cow with a perfect udder and great rib.

Coming In Hot has structural integrity and carries that maternal presence that is rare to achieve. He has a balanced design, added muscle shape, and is level and sound with stout features. He has a clean front end, deep body with much power and mass. His calves display tremendous quality and style, his body volume, fleshing ease, soundness and style are simply hard to find.

Donor Care Facility

Embryo Collection, Freezing & Transplant

IVF - In Vitro Fertilization

Export Certified

In-Clinic & On Farm Services

Recipient Programs



Bova-Tech Ltd.

P.O. Box 80142 Airdrie, Alberta T4B 2V8 Canada
Tel: (403) 332-1567 E-mail: info@bova-tech.com





RED ACC 13B

Tibbie



PIE

222

HOLLYWOOD



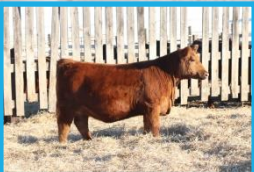
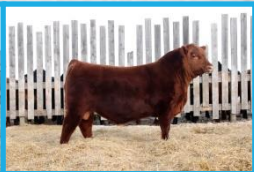
Red ACC Tibbie 13B is out of a very productive red cow. This red, moderate framed cow is made correct and true. She has a style and broodiness combined with a very unique pedigree. Red Tibbie is a feminine easy fleshing cow with a perfect udder and great rib.

Pie Hollywood is the world record selling Red Angus bull from the spring 2023 bull sale season, selling for \$400,000 valuation. His record setting appraisal is the result of his combination of curve bending calving ease and growth, breed leading carcass, captivating phenotype and is backed by the renown Abigrace cow family. We were not drawn to the bull by his outstanding numbers, but they are off the charts. We appreciate Hollywood for his massive phenotype and you couldn't put a better foot on a Red Angus bull.

**2020 Son
Tibbie 13B x
Reckoning 149A
ACCI 117H**

**2020 Son
Tibbie 13B x
Mann Red Box
ACCI 119H**

**2020 Daughter
Tibbie 13B x
Mann Red Box
ACCI 47H**



Donor Care Facility

Embryo Collection, Freezing & Transplants

IVF - In Vitro Fertilization

Export Certified

In-Clinic & On Farm Services

Recipient Programs



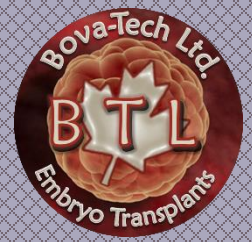
Bova-Tech Ltd.

B T L

Embryos for Sale

www.bova-tech.com

(403) 332-1567



RED ACC 13B
Tibbie



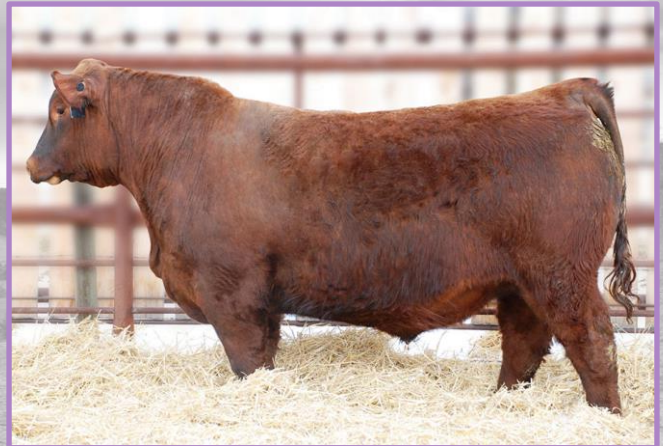
Red ACC Tibbie 13B is out of a very productive red cow. This red, moderate framed cow is made correct and true. She has a style and broodiness combined with a very unique pedigree. Red Tibbie is a feminine easy fleshing cow with a perfect udder and great rib.



SSS

TYCOON

225E



Tycoon Sons

Tycoon comes from the outstanding SSS program and has been used extensively in W Sunrise Angus and Y Coulee programs. He has an impressive profile, proud front and great feet and soundness with an impressive calving ease sire with a hard to fault pedigree. He is a dark red, masculine sire, that carries himself flawlessly in the bull pen. Consistency and phenotype speak for itself.



Donor Care Facility

Embryo Collection, Freezing & Transplants

IVF - In Vitro Fertilization

Export Certified

In-Clinic & On Farm Services

Recipient Programs

Bova-Tech Ltd.

P.O. Box 80142 Airdrie, Alberta T4B 2V8 Canada

Tel: (403) 332-1567 E-mail: info@bova-tech.com



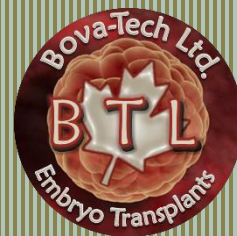
Bova-Tech Ltd.

B T L

Embryos for Sale

www.bova-tech.com

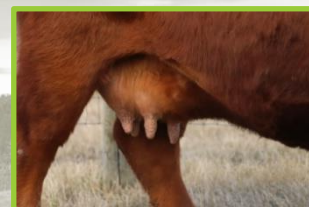
(403) 332-1567



RED ACC *Tibbie* 13B



Red ACC Tibbie 13B is out of a very productive red cow. This red, moderate framed cow is made correct and true. She has a style and broodiness combined with a very unique pedigree. Red Tibbie is a feminine easy fleshing cow with a perfect udder and great rib.



RREDS COMMON SENSE G933

RREDS Common Sense G933 has all the mass and body of his sire. He is one of the most universal and complete bulls produced by Rhodes Red Angus. His mother is a coming 5 year old Code Red that hasn't missed. The Code red daughters have a way of raising high sellers.

Common Sense is one of the stoutest Seneca sons produced. If you are looking for the same body design as Seneca but want a bit more frame, Common Sense is a great choice. Great Angus character with high testosterone and athleticism.



Donor Care Facility

Embryo Collection, Freezing & Transplants

IVF - In Vitro Fertilization

Export Certified

In-Clinic & On Farm Services

Recipient Programs

Bova-Tech Ltd.

P.O. Box 80142 Airdrie, Alberta T4B 2V8 Canada
Tel: (403) 332-1567 E-mail: info@bova-tech.com



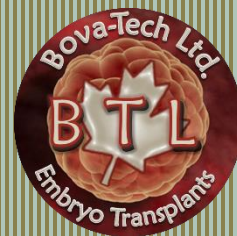
Bova-Tech Ltd.

B T L

Embryos for Sale

www.bova-tech.com

(403) 332-1567



Red ACC **TIBBIE** 98B



Red ACC Tibbie 98B has clean front structure, smooth makeup and refinement. This cow is admired for her sweet makeup and feminine features yet she is moderate and beefy.

With her easy-fleshing ability and exceptional mothering traits, 98B is a donor you won't want to miss using.

RREDS **COMMON SENSE** G933

RREDS Common Sense G933 has all the mass and body of his sire. He is one of the most universal and complete bulls produced by Rhodes Red Angus. His mother is a coming 5 year old Code Red that hasn't missed. The Code red daughters have a way of raising high sellers.

Common Sense is one of the stoutest Seneca sons produced. If you are looking for the same body design as Seneca but want a bit more frame, Common Sense is a great choice. Great Angus character with high testosterone and athleticism.



Donor Care Facility

Embryo Collection, Freezing & Transplants

IVF - In Vitro Fertilization

Export Certified

In-Clinic & On Farm Services

Recipient Programs

Bova-Tech Ltd.

P.O. Box 80142 Airdrie, Alberta T4B 2V8 Canada
Tel: (403) 332-1567 E-mail: info@bova-tech.com



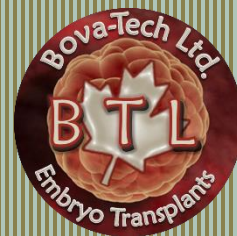
Bova-Tech Ltd.

B T L

Embryos for Sale

www.bova-tech.com

(403) 332-1567



Red ACC **TIBBIE** 98B



Red ACC Tibbie 98B has clean front structure, smooth makeup and refinement. This cow is admired for her sweet makeup and feminine features yet she is moderate and beefy.

With her easy-fleshing ability and exceptional mothering traits, 98B is a donor you won't want to miss using.

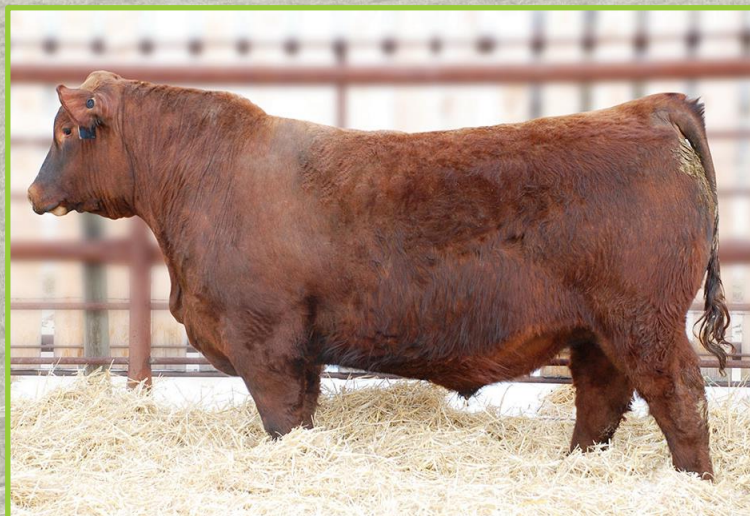


SSS

TYCOON

225E

Tycoon comes from the outstanding SSS program and has been used extensively in W Sunrise Angus and Y Coulee programs. He has an impressive profile, proud front and great feet and soundness with an impressive calving ease sire with a hard to fault pedigree. He is a dark red, masculine sire, that carries himself flawlessly in the bull pen. Consistency and phenotype speak for itself.



Donor Care Facility

Embryo Collection, Freezing & Transplants

IVF - In Vitro Fertilization

Export Certified

In-Clinic & On Farm Services

Recipient Programs

Bova-Tech Ltd.

P.O. Box 80142 Airdrie, Alberta T4B 2V8 Canada

Tel: (403) 332-1567 E-mail: info@bova-tech.com



Bova-Tech Ltd.

B T L

Embryos for Sale

www.bova-tech.com

(403) 332-1567



Red ACC **TIBBIE** 98B



Red ACC Tibbie 98B has clean front structure, smooth makeup and refinement. This cow is admired for her sweet makeup and feminine features yet she is moderate and beefy.

With her easy-fleshing ability and exceptional mothering traits, 98B is a donor you won't want to miss using.



PIE

222

HOLLYWOOD



Pie Hollywood is the world record selling Red Angus bull from the spring 2023 bull sale season, selling for \$400,000 valuation. His record setting appraisal is the result of his combination of curve bending calving ease and growth, breed leading carcass, captivating phenotype and is backed by the renown Abigrace cow family. We were not drawn to the bull by his outstanding numbers, but they are off the charts. We appreciate Hollywood for his massive phenotype and you couldn't put a better foot on a Red Angus bull.

Donor Care Facility

Embryo Collection, Freezing & Transplants

IVF - In Vitro Fertilization

Export Certified

In-Clinic & On Farm Services

Recipient Programs

Bova-Tech Ltd.

P.O. Box 80142 Airdrie, Alberta T4B 2V8 Canada

Tel: (403) 332-1567 E-mail: info@bova-tech.com



Red CCC
530C

Towaw Larkaba



PIE

222

HOLLYWOOD



Red CCC Towaw Larkaba 530C is dark red, deep bodied, long and feminine with a nice udder. She was a reserve Champion heifer at the 2016 Olds Fall Classic and Reserved Junior Yearling heifer at Farmfair International the same year.

Her maternal grandsire, Red TerRon Digger 11L, was a direct son of the great Ter-Ron Brandy 11C cow, and is the grand sire of the \$80,000 Red Cockburn Ribeye bull. He bred until he was 11 years old and was one of the soundest structured bulls ever used at Towaw. Her grandam, Larkaba 10M, is a direct Red Towaw Indeed 104H daughter.

Pie Hollywood is the world record selling Red Angus bull from the spring 2023 bull sale season, selling for \$400,000 valuation. His record setting appraisal is the result of his combination of curve bending calving ease and growth, breed leading carcass, captivating phenotype and is backed by the renown Abigrace cow family. We were not drawn to the bull by his outstanding numbers, but they are off the charts. We appreciate Hollywood for his massive phenotype and you couldn't put a better foot on a Red Angus bull.

**Semen
Production
& Freezing**

**Donor Care
Facility**

**Embryo Collection,
Freezing & Transplants**

**IVF - In Vitro
Fertilization**

**Export
Certified**

**In-Clinic & On
Farm Services**

**Recipient
Programs**

Bova-Tech Ltd.

P.O. Box 80142 Airdrie, Alberta T4B 2V8 Canada

Tel: (403) 332-1567 E-mail: info@bova-tech.com



Bova-Tech Ltd.

B T L



IVF Embryos for Sale

www.bova-tech.com

(403) 332-1567

Donor Care Facility

Embryo Collection, Freezing & Transplants

IVF - In Vitro Fertilization

Export Certified

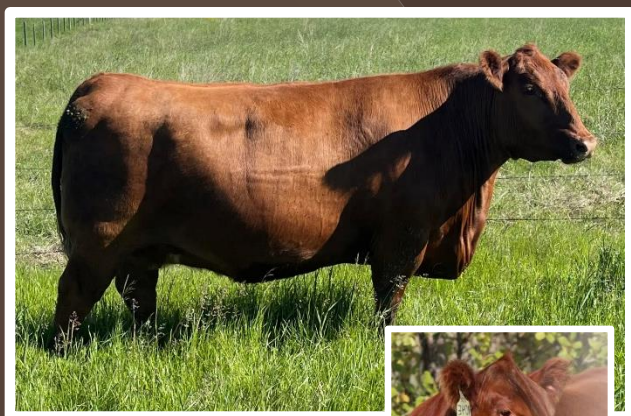
In-Clinic & On Farm Services

Recipient Programs

Red Mar Mac 104F
BONITA



Red Minburn 3Y
Copenhagen



The lead off female and no coincidence the high seller breed heifer out of the Mar Mac 2018 female sale. Bonita is an easy fleshing, thick, moderate a feminine cow with a lots of body depth and high performance EPDs with weaning and yearling weight on the top 1% of the breed. the Bonita cow family is well known for its maternal strength and breed consistency. Bonita 65X her dam, is one of the Canadian legends and high producing cow.



The Masterpiece record-setting outcross bull that keeps siring bull and heifer calves that rise to the top. Copenhagen 3Y has 14 sons working in the purebred herds and many more in some of the top commercial programs in the country. His daughters have turned into model Angus cows, built to stand the test of time.

Daughters of Copenhagen 3Y



Bova-Tech Ltd.

P.O. Box 80142 Airdrie, Alberta
T4B 2V8 Canada

Tel: (403) 332-1567 E-mail: info@bova-tech.com



Bova-Tech Ltd.

B T L

Embryos for Sale

www.bova-tech.com

(403) 332-1567



Red Mar Mac 104E BONITA



The lead off female, and no coincidence the high seller bred heifer out of the Mar Mac 2018 female sale. Bonita 104E is an easy fleshing, thick, moderate framed feminine cow with lots of body depth and high performance EPDs. Weaning and yearling weight in the top 1% of the breed.

The Bonita cow family is well known for its maternal strength and breed consistency. Her dam, Bonita 65X, is one of the Canadian legends and high producing cow.



Merit  1054J

INVESTMENT

Merit Investment 1054J was the high selling bull at the Merit Bull Sale for \$85,000 in a hotly contested battle. His dam has done so much for the industry already with many top sellers for many folks.



Donor Care Facility

Embryo Collection, Freezing & Transplants

IVF - In Vitro Fertilization

Export Certified

In-Clinic & On Farm Services

Recipient Programs

Bova-Tech Ltd.

P.O. Box 80142 Airdrie, Alberta T4B 2V8 Canada

Tel: (403) 332-1567 E-mail: info@bova-tech.com



Bova-Tech Ltd.

B T L



IVF Embryos for Sale

www.bova-tech.com

(403) 332-1567

Donor Care Facility

Embryo Collection, Freezing & Transplants

IVF - In Vitro Fertilization

Export Certified

In-Clinic & On Farm Services

Recipient Programs

Red Mar Mac 104E
BONITA

IVF
USA, E.U & AUS
Qualified

 **PIE** 222
HOLLYWOOD



The lead off female and no coincidence the high seller breed heifer out of the Mar Mac 2018 female sale. Bonita is an easy fleshing, thick, moderate a feminine cow with a lots of body depth and high performance EPDs with weaning and yearling weight on the top 1% of the breed. the Bonita cow family is well known for its maternal strength and breed consistency. Bonita 65X her dam, is one of the Canadian legends and high producing cow.



Pie Hollywood is the world record selling Red Angus bull from the spring 2023 bull sale season, selling for \$400,000 valuation. His record setting appraisal is the result of his combination of curve bending calving ease and growth, breed leading carcass, captivating phenotype and is backed by the renown Abigrace cow family. We were not drawn to the bull by his outstanding numbers, but they are off the charts. We appreciate Hollywood for his massive phenotype and you couldn't put a better foot on a Red Angus bull.



Bova-Tech Ltd.

P.O. Box 80142 Airdrie, Alberta
T4B 2V8 Canada

Tel: (403) 332-1567 E-mail: info@bova-tech.com



Bova-Tech Ltd.

B T L

Embryos for Sale

www.bova-tech.com

(403) 332-1567



Maya 19H
BONITA



DUFF 1941
Red Wood



Red Maya Bonita 19H has a strong maternal pedigree with solid conformation, partnered with calving ease and stayability. She has a moderate frame with thick top and square hip.

This is a cow with a great udder and milking ability. This female has powerful genetics that will leave you wanting more.

This Red Angus bull may be just as noble as the ancient redwood trees "Duff Redwood 1941". What a specimen he is in terms of depth of rib, fleshing ability and overall dimension in a moderate frame. Just like the coastal trees, you truly need to see Redwood for yourself to understand his overall quality and value. Duff Red Wood will undoubtedly leave deep roots in the beef industry

Donor Care Facility

Embryo Collection, Freezing & Transplants

IVF - In Vitro Fertilization

Export Certified

In-Clinic & On Farm Services

Recipient Programs

Bova-Tech Ltd.

P.O. Box 80142 Airdrie, Alberta T4B 2V8 Canada

Tel: (403) 332-1567 E-mail: info@bova-tech.com



Bova-Tech Ltd.

B T L

Embryos for Sale

www.bova-tech.com

(403) 332-1567



Red **MINBURN**
300Y
M A Y

Merit  1054J

INVESTMENT



Red Minburn May 300Y is a full sister to the breed legend, Red Minburn Copenhagen! Copenhagen and another full sister took Agribition by storm in 2011 at a figure of \$67,000 for Copenhagen to U2 Ranch and Heart of the Valley. Copenhagen daughters were a highlight at the U2 dispersal bringing some long dollars while Copenhagen semen, while limited in it's availability has commanded over \$300 a straw. 300Y is an absolute mirrored image of what a Copenhagen daughter looks like. Sound, good footed, productive cows.

Merit Investment 1054J was the high selling bull at the Merit Bull Sale for \$85,000 in a hotly contested battle. His dam has done so much for the industry already with many top sellers for many folks.

IVF & Conventional Embryos

Donor Care Facility

Embryo Collection, Freezing & Transplants

IVF - In Vitro Fertilization

Export Certified

In-Clinic & On Farm Services

Recipient Programs



Bova-Tech Ltd.

P.O. Box 80142 Airdrie, Alberta T4B 2V8 Canada

Tel: (403) 332-1567 E-mail: info@bova-tech.com



Bova-Tech Ltd.

B T L

Embryos for Sale

www.bova-tech.com

(403) 332-1567



Red **MINBURN**
300Y
M A Y



 **PIE** 222
HOLLYWOOD



Red Minburn May 300Y is a full sister to the breed legend, Red Minburn Copenhagen! Copenhagen and another full sister took Agribition by storm in 2011 at a figure of \$67,000 for Copenhagen to U2 Ranch and Heart of the Valley. Copenhagen daughters were a highlight at the U2 dispersal bringing some long dollars while Copenhagen semen, while limited in it's availability has commanded over \$300 a straw. 300Y is an absolute mirrored image of what a Copenhagen daughter looks like. Sound, good footed, productive cows.

Pie Hollywood is the world record selling Red Angus bull from the spring 2023 bull sale season, selling for \$400,000 valuation. His record setting appraisal is the result of his combination of curve bending calving ease and growth, breed leading carcass, captivating phenotype and is backed by the renown Abigrace cow family. We were not drawn to the bull by his outstanding numbers, but they are off the charts. We appreciate Hollywood for his massive phenotype and you couldn't put a better foot on a Red Angus bull.

Donor Care Facility Embryo Collection, Freezing & Transplants IVF - In Vitro Fertilization Export Certified In-Clinic & On Farm Services Recipient Programs



Bova-Tech Ltd.

P.O. Box 80142 Airdrie, Alberta T4B 2V8 Canada
Tel: (403) 332-1567 E-mail: info@bova-tech.com



Bova-Tech Ltd.

B T L

Embryos for Sale

www.bova-tech.com

(403) 332-1567



Red Scotts  **1055Y**
CJB JEWEL

KJHT FCF
Alibi



Jewel 1055Y is an exceptional female in many ways; she carries a strong maternal pedigree, performance and structure to lead a program to the next level. She is moderate frame with thick top and square hip.

This is a cow with a superior udder and milking ability. If you want to talk about cow power, this female is just that.



Alibi is the first Rioja son in Canada. Another outstanding individual out of a lead donor cow from Shady Knoll Cattle Co. SRA Paintbucket and sired by Rojas Rioja 6052. Riojas genetics in a high demand and very marketable in Canada and across the USA. SRA Paintbucket is none other than Power Take Off's Dam. Semen of this exclusive sire is limited with just a few straws offered for sale during 2020. Alibi is a stout bull with a clean front end and balanced EPDs.

- Donor Care Facility**
- Embryo Collection, Freezing & Transplants**
- IVF - In Vitro Fertilization**
- Export Certified**
- In-Clinic & On Farm Services**
- Recipient Programs**

Bova-Tech Ltd.

P.O. Box 80142 Airdrie, Alberta T4B 2V8 Canada
Tel: (403) 332-1567 E-mail: info@bova-tech.com



Bova-Tech Ltd.

B T L

Embryos for Sale

www.bova-tech.com

(403) 332-1567



Red Scotts



1055Y

CJB JEWEL

Red RRA

733

One and Only



Jewel 1055Y is an exceptional female in many ways; she carries a strong maternal pedigree, performance and structure to lead a program to the next level. She is moderate frame with thick top and square hip.

This is a cow with a superior udder and milking ability. If you want to talk about cow power, this female is just that.

Outstanding depth of body and capacity. Bold and robust in his design yet angular and attractive.

Exceptional neck extension and look coupled with mass and balance.

Impressive EPD spread from moderate BW to exceptional YW ranking at top 2% of the breed.

Donor Care Facility

Embryo Collection, Freezing & Transplants

IVF - In Vitro Fertilization

Export Certified

In-Clinic & On Farm Services

Recipient Programs

Bova-Tech Ltd.

P.O. Box 80142 Airdrie, Alberta T4B 2V8 Canada

Tel: (403) 332-1567 E-mail: info@bova-tech.com



Bova-Tech Ltd.

B T L



Embryos for Sale

www.bova-tech.com

(403) 332-1567

**Red SSF
271A
SCOTT'S KARI**

**RED KJHT
Power Take Off**



Kari 271A is a moderate framed cow carrying a lot of performance, she ranks top 2% of the breed for weaning weight, top 3% for yearling weight and top 4% for Maternal.

She has an excellent feet and udder, very sound and well-made cow with an EPD on the top 1% for stay-ability.

Kari 271A has the phenotypic quality and genetic profile to enhance any program.

KJHT Power Take Off is a bull who attained national championship status at just nine months of age and continued this trend until his show career ended being crowned National Champion bull in Ft. Worth 2019.

The son of Soo Line Power Eye 161X was mated perfectly to SRA Paint Bucket, one of the impressive females born into the Picabo family of excellence. PTO has worlds of muscle shape and power from end to end. He is big centered and has an impeccable look. This is a beef business bull, and his influence in the industry will greatly enhance the future of the breed.

Donor Care Facility

Embryo Collection, Freezing & Transplants

IVF - In Vitro Fertilization

Export Certified

In-Clinic & On Farm Services

Recipient Programs



Bova-Tech Ltd.

P.O. Box 80142 Airdrie, Alberta
T4B 2V8 Canada

Tel: (403) 332-1567 E-mail: info@bova-tech.com



Bova-Tech Ltd.

B T L



Embryos for Sale

www.bova-tech.com

(403) 332-1567

**Red SSF
271A**

SCOTTS KARI

RED SOO

Power Eye

161X



Kari 271A is a moderate frame cow carrying a lot of performance, she ranks top 2% of the breed for weaning weight, top 3 % for yearling weight and top 4% for Maternal.

She has an excellent feet and udder, very sound and well-made cow with an EPD on the top 1% for stayability. Kari 271A has the phenotypic quality and genetic profile to enhance any program.

Red Soo Line Power Eye 161X (#1406779) was the \$76,000 bull from the 2015 Mile High Classic Red Angus Auction.

He is the most famous son of Red Cockburn Ribeye 308U.

Power Eye has produced numerous high sellers, herd sires, and show winning progeny.

Power Eye produces stout, high performing cattle with an abundance of quality and power.

Donor Care Facility

Embryo Collection, Freezing & Transplants

IVF - In Vitro Fertilization

Export Certified

In-Clinic & On Farm Services

Recipient Programs



Bova-Tech Ltd.

P.O. Box 80142 Airdrie, Alberta
T4B 2V8 Canada

Tel: (403) 332-1567 E-mail: info@bova-tech.com



Bova-Tech Ltd.

B T L



Embryos for Sale

www.bova-tech.com

(403) 332-1567

Red SSF
271A
SCOTT'S KARI

Red MRLA
Resource
137E



Kari 271A is a moderate frame cow carrying a lot of performance, she ranks top 2% of the breed for weaning weight, top 3 % for yearling weight and top 4% for Maternal.

She has an excellent feet and udder, very sound and well-made cow with an EPD on the top 1% for stayability.

Kari 271A has the phenotypic quality and genetic profile to enhance any program.



Son of MRLA
Resource sold for
\$130,000
March 2020



Resource's influence has been widely accepted across North America. His daughters at the U2 Dispersal topped at \$23,000 with 30 Open Resource daughters averaging \$9,000 at the U2 Dispersal.

A performance sire in a breed that has done a great job on calving ease and maternal instinct.

- Top 55% of the breed for weaning weight
- Top 15% of the breed for yearling weight
- Top 15% of the breed for scrotal circumference
- Top 8% of the breed for carcass weight
- Top 35% of the breed for ribeye
- Top 3% of the breed for mature weight

Donor Care Facility

Embryo Collection, Freezing & Transplants

IVF - In Vitro Fertilization

Export Certified

In-Clinic & On Farm Services

Recipient Programs

Bova-Tech Ltd.

P.O. Box 80142 Airdrie, Alberta T4B 2V8 Canada
Tel: (403) 332-1567 E-mail: info@bova-tech.com



Bova-Tech Ltd.

B T L



Embryos for Sale

www.bova-tech.com

(403) 332-1567

**Red SSF
271A
SCOTTS KARI**

**RED WHEEL
CREED 214C**



Kari 271A is a moderate frame cow carrying a lot of performance, she ranks top 2% of the breed for weaning weight, top 3 % for yearling weight and top 4% for Maternal.

She has an excellent feet and udder, very sound and well-made cow with an EPD on the top 1% for stayability.

Kari 271A has the phenotypic quality and genetic profile to enhance any program.

Herd sires with the ability to combine the power that Red Wheel Creed possesses with exceptional maternal strength in an outcross pedigree are rare to find. Creed has the length of spine, muscle expression, bone and foot size which he transmits into his calves. This bull is backed by an exceptional dam and cow family. Creed's dam, Black Wheel Jestress 1y is a herd bull producing female. The Jestress cow family is noted for exceptional udders and hoof quality and being big ribbed, productive females. A few straws of semen were available during the Pinnacle Sale in 2018, the quest for the very best Red Angus seedstock in Canada may be found. the significance of this great breeding bull is fully demonstrated throughout the pedigree, statistical information and the footnote discussion. this breeding bull, with progeny on the ground, is an opportunity to obtain the influence of one of the most dynamic breeding bulls in the industry today.

Donor Care Facility

Embryo Collection, Freezing & Transplants

IVF - In Vitro Fertilization

Export Certified

In-Clinic & On Farm Services

Recipient Programs



Bova-Tech Ltd.

**P.O. Box 80142 Airdrie, Alberta
T4B 2V8 Canada**

Tel: (403) 332-1567 E-mail: info@bova-tech.com



Bova-Tech Ltd.

B T L



Embryos for Sale

www.bova-tech.com

(403) 332-1567

**Red SSF
271A
SCOTTS KARI**

**RED U-2
Authentic
139A**



Kari 271A is a moderate framed cow carrying a lot of performance, she ranks top 2% of the breed for weaning weight, top 3% for yearling weight and top 4% for Maternal.

She has excellent feet and udder, and is very sound and a well-made cow with an EPD on the top 1% for stay-ability. Kari 271A has the phenotypic quality and genetic profile to enhance any program.



Maternal greatness and sheer power are combined in this leading sire, Red U-2 Authentic 139A.

Authentic was a past high-selling bull at U2 and has gone on to be a potent breeder that has had positive production results for the three progressive breeders that own him. Phenotypically he is the ideal Red Angus sire, super clean fronted with an attractive head that will add length, power and over all completeness to his progeny. He is out of one of the great donors at U2, Stormy 7202T, and complimented by a stacked maternal pedigree!

**Donor Care
Facility**

**Embryo Collection,
Freezing & Transplants**

**IVF - In Vitro
Fertilization**

**Export
Certified**

**In-Clinic & On
Farm Services**

**Recipient
Programs**

Bova-Tech Ltd.

P.O. Box 80142 Airdrie, Alberta T4B 2V8 Canada
Tel: (403) 332-1567 E-mail: info@bova-tech.com



Bova-Tech Ltd.

B T L



Embryos for Sale

www.bova-tech.com

(403) 332-1567

Red SSF
271A
SCOTT'S KARI

DUFF 1941
Red Wood



Kari 271A is a moderate framed cow carrying a lot of performance, she ranks top 2% of the breed for weaning weight, top 3% for yearling weight and top 4% for Maternal. She has an excellent feet and udder, very sound and well-made cow with an EPD on the top 1% for stay-ability.

Kari 271A has the phenotypic quality and genetic profile to enhance any program.

This Red Angus bull may be just as noble as the ancient redwood trees "Duff Redwood 1941". What a specimen he is in terms of depth of rib, fleshing ability and overall dimension in a moderate frame. Just like the coastal trees, you truly need to see Redwood for yourself to understand his overall quality and value.

Duff Redwood 1941 will undoubtedly leave deep roots in the beef industry.

Donor Care Facility

Embryo Collection, Freezing & Transplants

IVF - In Vitro Fertilization

Export Certified

In-Clinic & On Farm Services

Recipient Programs

Bova-Tech Ltd.

P.O. Box 80142 Airdrie, Alberta
T4B 2V8 Canada

Tel: (403) 332-1567 E-mail: info@bova-tech.com



Bova-Tech Ltd.

B T L



Embryos for Sale

www.bova-tech.com

(403) 332-1567

Red SSF
271A
SCOTTS KARI

Red U2 284F
DOMINION

IVF



Kari 271A is a moderate framed cow carrying a lot of performance, she ranks top 2% of the breed for weaning weight, top 3% for yearling weight and top 4% for Maternal.

She has an excellent feet and udder, very sound and well-made cow with an EPD on the top 1% for stay-ability.

Kari 271A has the phenotypic quality and genetic profile to enhance any program.

**FEMALE
SEXED**

Red U2 Dominion 284F is an outcross sire who continues to make a name for himself as a sire who stamps his progeny with phenotype, foot quality, and stoutness.

His pedigree has generations of maternal legends and a matron derived from a notable cow family known for fertility, calf performance, and udder quality.

Donor Care Facility

Embryo Collection, Freezing & Transplants

IVF - In Vitro Fertilization

Export Certified

In-Clinic & On Farm Services

Recipient Programs

Bova-Tech Ltd.

P.O. Box 80142 Airdrie, Alberta
T4B 2V8 Canada

Tel: (403) 332-1567 E-mail: info@bova-tech.com



Bova-Tech Ltd.

B T L

Embryos for Sale

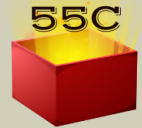
www.bova-tech.com

(403) 332-1567



**Red SSF
271A
SCOTTS KARI**

**MANN
RED BOX**



Kari 271A is a moderate frame Cow carrying a lot of performance, she ranks top 2% of the breed for weaning weight, top 3 % for yearling weight and top 4% for Maternal.

She has an excellent feet and udder, very sound and well-made cow with an EPD on the top 1% for stay-ability.

Kari 271A has the phenotypic quality and genetic profile to enhance any program.

Redbox 55C is currently one of the most talked about Red Angus bulls in the breed. His calves display tremendous quality and style. His demand and inquiries stretch across the US, Canada and South America. The dam of Redbox is Peltons Miss AJA 0839U and at 11 years of age she is extremely sound and impressive from every angle. He consistently transmits quality and eye appeal. Redbox displays unmatched phenotypic quality and possesses many needed traits to inject into the Red Angus Breed. His body volume, fleshing ease, soundness and style are simply hard to find. Upon inspection Redbox invokes a "wow" from the mouth of all that have seen him. His ability to make his mark as one of the great maternal sires of the breed is imminent.

Donor Care Facility

Embryo Collection, Freezing & Transplants

IVF - In Vitro Fertilization

Export Certified

In-Clinic & On Farm Services

Recipient Programs

Bova-Tech Ltd.

P.O. Box 80142 Airdrie, Alberta
T4B 2V8 Canada

Tel: (403) 332-1567 E-mail: info@bova-tech.com



Bova-Tech Ltd.

B T L

Embryos for Sale

www.bova-tech.com

(403) 332-1567



Red

LONE STONE

Beula

35H



Red Lone Stone Beula 35H is a very well made female that is well-balanced. Buela is the complete package, an impressive cow with a small frame build (5.0 to 5.5 frame score). She has a very nice temperament, beautiful coat, solid feet, and perfect udder. The potential for 35H to become a very productive cow and raise outstanding offspring is already proven with her well-formed bull calf that hit the ground this year.

Red U2 284F

DOMINION

Red U2 Dominion 284F is an outcross sire who continues to make a name for himself as a sire who stamps his progeny with phenotype, foot quality, and stoutness. His pedigree has generations of maternal legends and a matron derived from a notable cow family known for fertility, calf performance, and udder quality.



Donor Care Facility

Embryo Collection, Freezing & Transplants

IVF - In Vitro Fertilization

Export Certified

In-Clinic & On Farm Services

Recipient Programs

Bova-Tech Ltd.

P.O. Box 80142 Airdrie, Alberta T4B 2V8 Canada

Tel: (403) 332-1567 E-mail: info@bova-tech.com

